



4000016771

P-3100

CIS Talkback Master Station

- ✓ Complies with IEC 60945 Standard for Marine Equipment
- ✓ DNV Type Approval
- ✓ CCS Type Approval



Onboard communication

Description

Maritime Talk Back System: CIS Talkback Master Station P-3100

Elevate onboard communication with our CIS Talkback Master Station P-3100, an integral component of our Maritime Talk Back System designed for unparalleled clarity and reliability in maritime environments. This system facilitates seamless point-to-point, group, and all-call functionality, alongside emergency Public Address capabilities, making it essential for efficient and safe maritime operations.

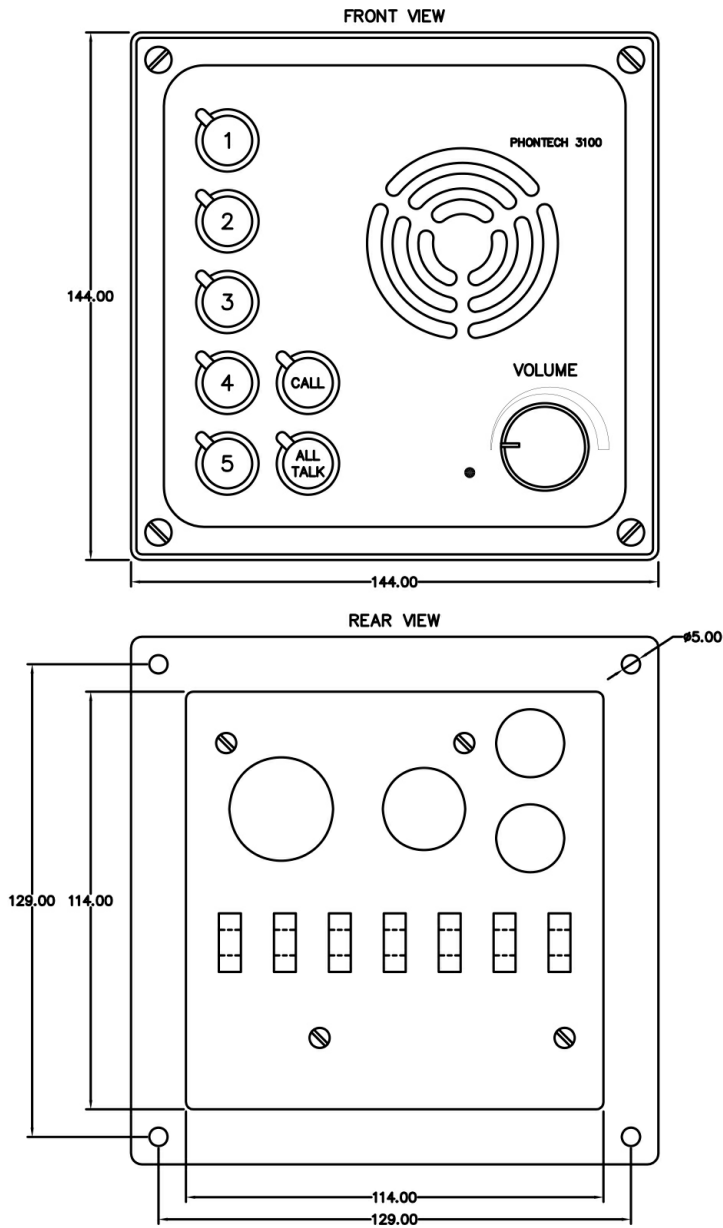
Features and Benefits:

- ✓ **Comprehensive Connectivity:** Supports communication with up to 5 substations/loudspeaker lines, ensuring wide coverage across the vessel.
- ✓ **Flexible Control Outputs:** Includes 4 control outputs for external call signal devices, compatible with substation types P-9003, P-9016, P-9135.

- ✔ Enhanced Audio Components: Integrated microphone and loudspeaker, with options for connecting gooseneck or handheld microphones and additional external loudspeakers.
- ✔ User-Centric Design: Front volume control for easy adjustments and bridge wing extensions for expanded usability.
- ✔ Powerful Output: Delivers 12W output power, expandable with line amplifiers for broader communication reach.

Practical for maritime operations, the CIS Talkback Master Station P-3100 offers a reliable communication system. It supports essential, clear communication for safety and operational efficiency onboard, catering to the needs of officers and crew alike.

Technical Dimensions



Specifications

MECHANICAL

| | |
|--------------------|----------------|
| Dimensions (WxHxD) | 144x144x100 mm |
|--------------------|----------------|

| | |
|--------|--------|
| Weight | 2.5 kg |
|--------|--------|

| | |
|-------|----------|
| Color | RAL 9005 |
|-------|----------|

| | |
|----------|----------------|
| Material | Aluminium / PC |
|----------|----------------|

| | |
|----------|-----------------|
| Mounting | Flush / Console |
|----------|-----------------|

| | |
|--------|--------------|
| Fixing | 4 x M4 bolts |
|--------|--------------|

| | |
|--------|-------|
| Access | Front |
|--------|-------|

| | |
|-------------|------|
| Cable Entry | Rear |
|-------------|------|

ELECTRICAL

| | |
|--------------|--------------------|
| Power Supply | 24 VDC (22-32 VDC) |
|--------------|--------------------|

| | |
|-------------------|--------------------------|
| Power Consumption | 25W (peak), 3W (typical) |
|-------------------|--------------------------|

| | |
|------|---------------|
| Fuse | 5x20 mm, 1A F |
|------|---------------|

| | |
|-----------------------------------|------------|
| Heat Dissipation (typical/max) | < 3W / 10W |
|-----------------------------------|------------|

| | |
|-------------|--|
| Termination | Screw terminals \leq 1.5mm ² |
|-------------|--|

| | |
|-----------------------|---------|
| Compass Safe Distance | > 2.2 m |
|-----------------------|---------|

AMPLIFIER(S)

| | |
|-----------------|-------------|
| Frequency Range | 300-3400 Hz |
|-----------------|-------------|

| | |
|--------------|--|
| Power Output | 10W / 4 Ω (Substation Lines 1-5) |
|--------------|--|

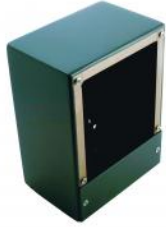
ENVIRONMENTAL

| | |
|-------------|----------------|
| Temperature | -15°C to +55°C |
|-------------|----------------|

| | |
|----------|-----------------|
| Humidity | +93% (at +40°C) |
|----------|-----------------|

| | |
|---------------------------|-------|
| Ingress Protection Rating | IP-22 |
|---------------------------|-------|

Accessories



Wallbox for CIS

Wallbox for CIS Talkback System (144x144mm)



P-9029

Headset with boom mic, headband, and 10m cable



P-9026

Dimmer module for CIS P-31XX Master Stations



DIMMER BOARD FOR CIS 31XX

97301-022



U2410

Foot Switch Indoor Use



Goose Neck Microphone, 60 cm

Additional gooseneck microphone for CIS Talkback Master Stations