



# INFOTAINMENT & IPTV SYSTEM

ONBOARD ENTERTAINMENT

# vingtor STENTOFON

by ZENITEL GROUP

Vingtor-Stentofon products are developed by the Zenitel Group and includes a range of high quality communications equipment and systems. Being in business since 1901, Zenitel's products are recognized globally for offering high quality communications for both offshore and onshore installations. Primary system offering within the Vingtor-Stentofon portfolio are Public Address and Intercom. Zenitel and the company's global partner network, also integrate these systems with other security devices; including Radio, CCTV, Access Control and Alarm for a comprehensive security solution.

Vingtor-Stentofon is world-renowned for its extensive knowledge in the design, construction, installation and maintenance of integrated marine communication systems. Leveraging our long-term experience serving the maritime industry, we offer an impressive portfolio and provide cutting edge solutions to vessels worldwide under the brand name of Vingtor-Stentofon. The Vingtor-Stentofon brand underpins our reputation as a supplier of the most flexible, reliable and advanced communication systems available today.

## MEETING YOUR REGULATORY REQUIREMENTS

All Vingtor-Stentofon products that form a part of critical communication have been tested according to IEC 60945, IEC 60533 standards, and comply with SOLAS regulations and codes relevant to on-board communication systems. Our systems are delivered in accordance with the rules of all major classification societies.

## FOR ALL YOUR SALES & AFTER SERVICE REQUIREMENTS

Vingtor-Stentofon is a specialist provider of spare parts, repairs, maintenance contracts and refit solutions. Responsibility and availability are our guidelines and customer support and service a first priority.



2015



2013



2012



2011



2009



1952



1964



1975



1996



2001

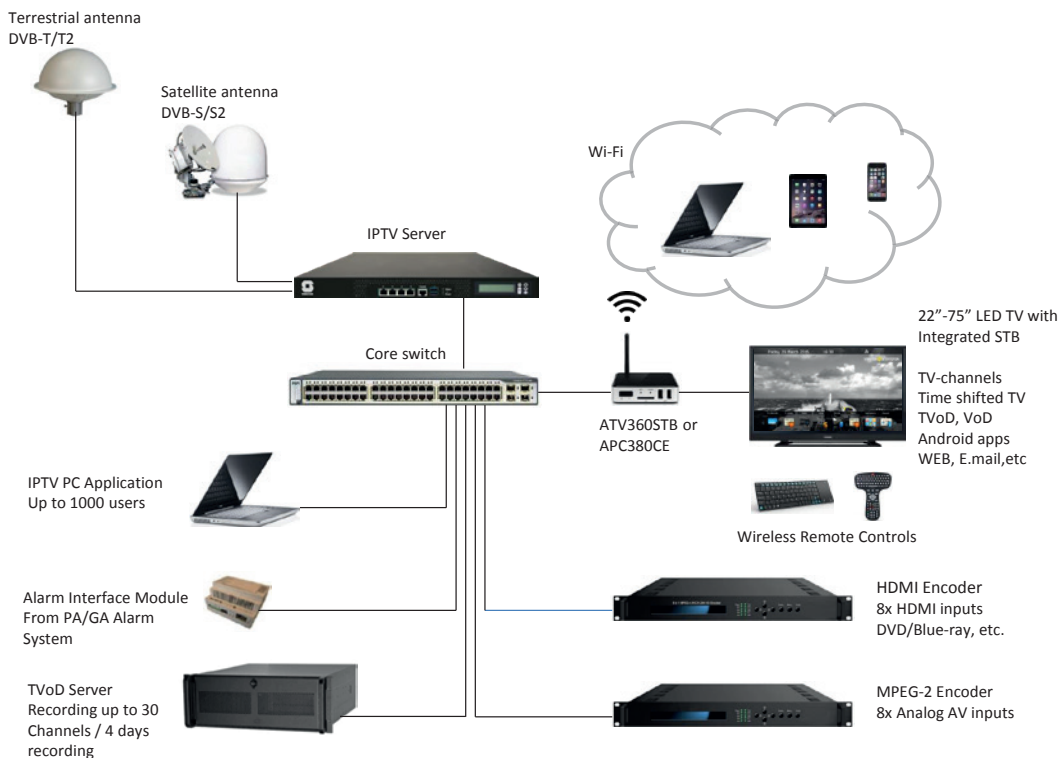
<b>INFOTAINMENT &amp; IPTV SYSTEM</b>	<b>4</b>
<b>IPTV SERVERS GATEWAYS ENCODERS TRANS-CODERS</b>	<b>5</b>
<b>IPTV TELEVISIONS STB SMARTBOX PHERIPHERAL EQUIPMENT</b>	<b>7</b>
<b>IPTV CI MODULES LICENSES &amp; SOFTWARE</b>	<b>9</b>

# INFOTAINMENT & IPTV SYSTEM

The VINGTOR-STENTOFON Infotainment & IPTV system with its comprehensive functionality in a highly HW-efficient setup is ideal for marine vessels. Based on forefront technology the IPTV system is easy to set up and configure and provides customized interactive solutions in addition to traditional TV channels. The IPTV technology enables broadcasts television via IP networks with HD video and multi-channel audio. The IP protocol enables two-way connections between head-end and set-top boxes. Due to the features mentioned, users can enjoy interactive TV and other media features not available to conventional television subscribers.

## IPTV BENEFITS:

- **Space efficient.** Provides a wide range of functions with few components.
- **Access to all digital TV signals.** Digital terrestrial and satellite signals can all be combined in the same IPTV server without the need for additional HW or licenses.
- **Versatile.** The Set-top boxes run on an Android platform, enabling access to applications such as web browsing, e-mail, Skype, social media apps. etc. from any TV.
- **Video on Demand (VoD).** This is the individual delivery of video content to a subscriber. This service allows its users to watch any movie from the VoD server's media library. The subscriber can use the pause and rewind features.
- **Time Shifted TV adds interactive features to TV channel viewing.** The subscriber can pause the playback at any time and resume it later. There is also a rewind option for TV programs.
- **TV on Demand (TVoD).** The selected TV channels are recorded and stored for a predefined period and is available for viewing individually on each TV.
- **3D Support.** Users can watch live 3D TV channels as well as 3D movies from VoD server's media library.
- **4K UHD Support.** Users can watch live 4K UHD TV channels as well as 4K UHD movies from VoD server's media library.



# IPTV SERVERS GATEWAYS ENCODERS TRANS- CODERS

2320005003

## MPEG-2 ENCODER 8X

- 8x AV inputs
- 1x ASI input
- 1x ASI output
- 1x IP output



Size (WxHxD) 19" 1HU 440 x 44 x 455 mm  
Weight: 4 kg

2320005006

## IPTV SERVER 8000

- 8x DVB-S/S2/T/T2/C receivers
- VoD server: 1 TB, 50 concurrent streams
- Middle ware: 1000 subscribers
- 4 x Gigabit Ethernet 10/100/1000 Mb/s
- 8 CI slots
- Support for 3D movies and live channels with use of 3D TV sets
- Support for 4K UHD movies and live channels with use of 4K UHD TV sets
- Optional interface to hotel property management systems (PMS)



Size (WxHxD) 19" 1HU, 440 x 44 x 410mm, Weight: 8.8 kg

Additional Information: Optional infotainment channel license: 2320005031 Up to 10 infotainment channels

2320005012

## HDMI ENCODER 8X

- 8 x HDMI inputs
- 1 x ASI input, BNC
- 1 x ASI output
- 1 x IP output



Size (WxHxD) 19" 1HU 440 x 44 x 410mm  
Weight: 4 kg

2320005002

## DVB TO IP GATEWAY 8X

- 8 x DVB-S/S2/T/T2/C receivers
- 4 x Gigabit Ethernet 10/100/1000 Mb/s
- 8 x CI slots



Size (WxHxD) 19" 1HU, 440 x 44 x 410mm Weight: 8.8 kg

2320005013

## ATSC TO IP GATEWAY 8X

- 8 x ATSC Receivers
- 1 x IP output

**Note! For terrestrial signals in USA and Canada**

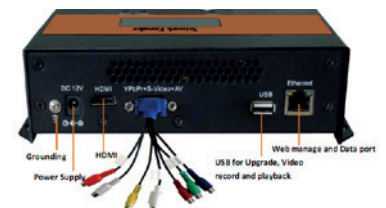


Size (WxHxD) 19" 1HU 440 x 44 x 410mm  
Weight: 4 kg

2320005014

## NETWORK ENCODER 1X HDMI OR 1 X VGA/AV/S-VIDEO/YPBPR

- 1 x HDMI or 1x VGA/AV/S-Video/YPbPr
- IP Output over UDP (Unicast/Multicast) RTP, RTSP, HTTP, HLS
- Easy operation with LCD + control buttons and WEB-server management
- Power supply 110 - 230 VAC



Size (WxHxD) 183 x 45 x 110 mm  
Weight: 1 Kg

2320005004

### TRANSCODER SERVER 8X

- Streaming as multicast (UDP) or unicast (HTTP)
- Can process up to 16 SD, 8 HDMI or 8 HD-SDI channels simultaneously for encoding



Size (WxHxD) 19" 1HU 440 x 44 x 410mm Weight: 8.8 kg

2320005011

### CONTROL SERVER 2000

- CPU: Intel Core I7, 8MB cache, GPU, Quad core
- Memory: 8 GB, DDR3 1333, KIT 2\*4 GB
- SSD: Intel Series 530, Sata3, 240.00 GB
- Additional Controller: 2\*serial, 1\*parallel
- Additional LAN card PCI-E 10/100/1000
- DVD+-RW drive
- Operating system: Windows 7 Professional



Size (WxHxD) 19" 4HU, 430 x176 x 445mm, Weight: 22 kg

2320005009

### TVOD SERVER 3000

- View recent TV programs
- Pause or rewind TV programs
- Easy to setup and maintain
- After power loss it automatically powers on and starts recording and TV playback on-demand
- Storage space: SATA3 2\*1500.00 GB = 3000.00 GB (enough for recording 25 channels for 2 days with average frame rate of 4 Mb/s)



Size (WxHxD) 19" 4HU, 430 x176 x 445mm, Weight: 22 kg

2320005010

### TVOD SERVER 8000

- View recent TV programs
- Pause or rewind TV programs
- Easy to setup and maintain
- After power loss it automatically powers on and starts recording and TV playback on-demand
- Storage space: SATA3 2\*4000.00 GB = 8000.00 GB (enough for recording 30 channels for 4 days with average frame rate of 4 Mb/s)



Size (WxHxD) 19" 4HU, 430 x176 x 445mm, Weight: 22 kg

3006204193

### ALARM INPUT INTERFACE MODULE WITH SOFTWARE

- Mute/Turn off TV's during alarm
- Send dynamic message to screen
- External power 18-36VDC external power
- 6 inputs contacts (NO)



Size (WxHxD) 88 x 90 x 58 mm Weight: 0.2 kg

# IPTV TELEVISIONS STB SMARTBOX PHERIPHERAL EQUIPMENT



2320005020

## ANDROID STB

- IR extender
- Remote Controller
- 2xUSB, 1xMicro SD, HDMI, RJ45, 802.11 b/g/n Wi-Fi module
- Power adapter US/UK/EU plug



Size (WxHxD) 100 x 24 x 105 mm Weight: 0.147 kg

2320005038

## ANDROID 4K UHD STB

- IR extender
- Remote Controller
- 2xUSB, 1xMicro SD, HDMI, RJ45, 802.11 b/g/n Wi-Fi module
- Power adapter US/UK/EU plug



Size (WxHxD) 100 x 24 x 105 mm Weight: 0.147 kg

2320005021

## 22" LED TV WITH INTEGRATED STB

- STB mounted on back side and powered through TV
- Ir-loop
- 1x Remote Controller



Size (WxHxD without stand): 515 x 335 x 38.5 mm Weight: 2.96 kg

Additional Information:  
2320005062 TV Wall Mount Bracket

2320005028

## 28" LED TV WITH INTEGRATED STB

- STB mounted on back side and powered through TV
- Ir-loop
- 1x Remote Controller



Size (WxHxD without stand): 641 x 402 x 74mm Weight: 3.48kg

Additional Information:  
2320005062 TV Wall Mount Bracket

2320005022

## 32" LED TV WITH INTEGRATED STB

- STB mounted on back side and powered through TV
- Ir-loop
- 1x Remote Controller



Size (WxHxD without stand): 729 x 449 x 76mm Weight: 4.52 kg

Additional Information:  
2320005062 TV Wall Mount Bracket

2320005036

## 43" LED TV WITH INTEGRATED STB

- STB mounted on back side and powered through TV
- Ir-loop
- 1x Remote Controller



Size (WxHxD without stand): 924 x 561 x 72.5mm Weight: 7 kg

Additional Information:  
2320005060 TV Wall Mount Bracket

2320005037

## 49" LED TV WITH INTEGRATED STB

- STB mounted on back side and powered through TV
- Ir-loop
- 1x Remote Controller



Size (WxHxD without stand): 961 x 592 x 62mm Weight: 8.78kg

Additional Information:  
2320005060 TV Wall Mount Bracket

2320005027

## 55" LED TV WITH INTEGRATED STB

- STB mounted on back side and powered through TV
- Ir-loop
- 1x Remote Controller



Size (WxHxD without stand): 1242 x 750 x 62mm Weight: 14.4 kg

Additional Information:  
2320005060 TV Wall Mount Bracket

2320005071

## 50" 3D LED TV WITH INTEGRATED STB

- Active 3D
- STB mounted on back side and powered through TV
- Ir-loop
- 1x Remote Controller and two 3D glasses



Size (WxHxD without stand): 1116 x 656 x 64mm Weight: 13.6 kg

Additional Information:  
2320005060 TV Wall Mount Bracket

2320005072

### 55" 3D LED TV WITH INTEGRATED STB

- Active 3D
- STB mounted on back side and powered through TV
- IR-loop
- 1x Remote Controller
- 2x 3D glasses



Size (WxHxD without stand): 1234 x 722 x 65mm  
Weight: 17.2 kg

Additional Information:  
2320005060 TV Wall Mount Bracket

2320005075

### 75" 3D LED TV WITH INTEGRATED STB

- Active 3D
- STB mounted on back side and powered through TV
- IR-loop
- 1x Remote Controller
- 2x 3D glasses



Size (WxHxD without stand): 1677 x 969 x 79 mm  
Weight: 34,9 kg

Additional Information:

2320005082

### 65" UHD 4K LED TV WITH INTEGRATED STB

- STB mounted on back side and powered through TV
- IR-loop
- 1x Remote Controller



Size (WxHxD without stand): 1450 x 848 x 125 mm  
Weight: 33,2 kg

Additional Information:  
2320005060 TV Wall Mount Bracket

2320005060

### BT8432/B TV WALL MOUNT BRACKET W/TILT

- Screen size: up to 65"
- Max. weight: 70kg (35kg when pole mounted)
- Simple tilt adjustment: +/- 15
- Mounting holes spacing: Fits VESA mounting from 75x75mm to 800x400mm



Size (WxHxD) 865 x 500 x 80mm Weight: 6 kg

2320005073

### 65" 3D LED TV WITH INTEGRATED STB

- Active 3D
- STB mounted on back side and powered through TV
- IR-loop
- 1x Remote Controller
- 2x 3D glasses



Size (WxHxD without stand): 1371 x 799 x 93mm  
Weight: 33.7 kg

Additional Information:  
2320005060 TV Wall Mount Bracket

2320005080

### 48" UHD 4K LED TV WITH INTEGRATED STB

- STB mounted on back side and powered through TV
- IR-loop
- 1x Remote Controller



Size (WxHxD without stand): 1087 x 663 x 62,5 mm  
Weight: 11,6 kg

Additional Information:  
2320005060 TV Wall Mount Bracket

2320005041

### IPTV K400 WIRELESS KEYBOARD W/TOUCHPAD

- Wireless Protocol 2.4 GHz (Unifying)
- Wireless Range Up to 33 Feet or 10 Meters
- Receiver USB 2.0



Size (WxDxH) 354 x 136 x 24 mm Weight: 0.360 kg

Additional Information: 2xAA (Alkaline), Removable/ Replaceable

2320005062

### LCY-042T TV WALL MOUNT BRACKET W/TILT AND SWIVEL

- Screen size: 17" – 42"
- Max. weight: 30kg
- Vertical adjustment: +/- 20
- Horizontal adjustment: +/- 30
- Mounting holes spacing: Fits VESA mounting from 75x75mm to 200x200mm



Size (WxHxD) 235 x 230 x 100mm Weight: 1.1kg

2320005074

### TDG-BT500A SONY ACTIVE 3D GLASSES

- Light weight and Adjustable
- Lithium Coin Battery (CR2025)
- Operating time approx. 100 hours
- Bluetooth RF operation system
- Active 3D



Size (WxHxD): 147 x 46 x 170mm Weight: 0,036 kg

Additional Information:  
For use with 3D LED TV 2320005071, 2320005072, 2320005073

2320005081

### 55" UHD 4K LED TV WITH INTEGRATED STB

- STB mounted on back side and powered through TV
- IR-loop
- 1x Remote Controller



Size (WxHxD without stand): 1242 x 750 x 62 mm  
Weight: 14,6 kg

Additional Information:  
2320005060 TV Wall Mount Bracket

2320005042

### IPTV RII MINI 12 ANDROID MINI WIRELESS KEYBOARD W/ TOUCHPAD

- Receiver (dongle): Nano style
- Connect port: With USB2.0 above
- RF mode: 2.4Ghz GFSK
- Transmission distance: Up to 10 meters

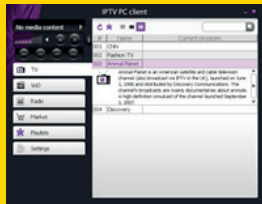


Size (WxDxH) 260 x 83 x 13.5 mm Weight: 0.200 kg

Additional Information: Power supply: Rechargeable 450mAh polymer Lithium-ion battery



# IPTV CI MODULES LICENSES & SOFTWARE



2320005050

## CONAX PRO CAM MODULE 4-CHANNEL

- Conditional Access System CONAX
- DVB Common Interface standard and PCMCIA ISO /IEC



Size: Smart Card: full ISO 7816-3 compliant

2320005051

## VIACCESS PRO CAM MODULE 4-CHANNEL

- Conditional Access System VIACCESS
- DVB Common Interface standard and PCMCIA ISO /IEC



Size: Smart Card: full ISO 7816-3 compliant

2320005052

## IRDETO PRO CAM MODULE 4-CHANNEL

- Conditional Access System IRDETO
- DVB Common Interface standard and PCMCIA ISO /IEC



Size: Smart Card: full ISO 7816-3 compliant

2320005031

## MYTV DIGITAL SIGNAGE LICENSE FOR IPTV

- License for creating playlists and defining time of broadcast
- 10 Infochannel / Signage TV Channels license

Size N/A

2320005032

## IPTV PC CLIENT

PC Client provides the following functionality:

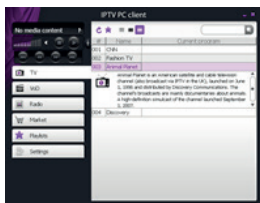
- TV channels (including encrypted ones)
- Pre-recorded TV programs (TVoD)
- Time-shifted TV
- Radio stations
- Playlists
- Movies (VoD)
- Financial reports
- Tariff plan management
- Various interactive services

Supported operating systems:

- Windows 2000/XP/7
- Linux

Supported operating systems:

License for 1000 subscribers included



Size N/A

2320005034

## INTERFACE TO FIAS PROTOCOL

- License for 1000 subscribers

2320005039

## TRANSCODER ADD ON

- Transcoding license and software for H.264 or HLS
- License can be used with control server 2000 or as a module for IPTV server 8000 or DVB to IP gateway 8x
- Channel mosaic option

A100K11535

## IPTV ADMINISTRATORS GUIDE





[www.zenitel.com](http://www.zenitel.com)

---

DOC NO

**A100K11557** 13.04.2016

[sales@zenitel.com](mailto:sales@zenitel.com)

Zenitel and its subsidiaries assume no responsibility for any errors that may appear in this publication, or for damages arising from the information therein. Vingtor-Stentofon products are developed and marketed by Zenitel. The company's Quality Assurance System is certified to meet the requirements in NS-EN ISO 9001. Zenitel reserves the right to modify designs and alter specifications without notice. ZENITEL PROPRIETARY. This document and its supplementing elements, contain Zenitel or third party information which is proprietary and confidential. Any disclosure, copying, distribution or use is prohibited, if not otherwise explicitly agreed in writing with Zenitel. Any authorized reproduction, in part or in whole, must include this legend. Zenitel – All rights reserved.